

FEB 1982

# YPSILANTI GLEANINGS

## PAST SCENES and OLD TIMES

YPSILANTI HISTORICAL SOCIETY ~ PUBLICATION ~



Ypsilanti Historical Museum  
~ 220 N. Huron Street ~

NON-PROFIT ORG.  
U.S. POSTAGE

PAID

Ypsilanti, Michigan  
Permit No. 399

ADDRESS CORRECTION REQUESTED



CITY OF YPSILANTI, MICHIGAN  
OFFICE OF THE MAYOR  
1 SOUTH HURON STREET  
YPSILANTI, MICHIGAN 48197

March 19, 1981

Dear Friend:

Ypsilanti's great history began in 1809 when three French explorers -- Gabriel Godfroy, Romaine LaChambre and Francois Pepin -- established a trading post on the west bank of the Huron River, 100 yards north of the Old Sauk Trail (Michigan Avenue).

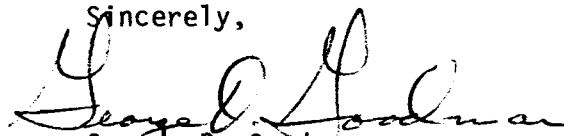
Their enterprise in laying out 2632 acres in 1811 for 4 French Claims is a splendid example to all generations to come.

The efforts of the Ypsilanti Historical Society, organized in 1960, have made us all aware of Ypsilanti's remarkable Heritage. Ypsilanti citizens as well as former residents of our area have become interested in the city's history and learning where their families fitted into scenes of the past.

Ypsilanti now has a fine Historical Museum at 222 N. Huron Street, expertly staffed by volunteers, which is visited every year by more and more people. The Society has a membership of more than 375 and publishes a quarterly known as "Gleanings".

If our Historical Museum is to continue to grow, we need continued financial support and additional family records, photos, diaries, letters and memorabilia.

Sincerely,

  
George D. Goodman  
Mayor

# GLEANINGS

FEBRUARY, 1982

Publication of the YPSILANTI  
HISTORICAL SOCIETY

## TABLE OF CONTENTS

MARCH MEETING ANNOUNCEMENT.	p. 1
The Mayors of Ypsilanti, Part II This feature is a continuation. Part I will be found in the October 1981 issue. By Foster Fletcher.	p. 2
Notes From the Museum and Archives	p. 17
New Members	p. 20
Acquisitions	p. 21
Do You Know Your Ancestors?	p. 23

\* \* \* \* \*

"Gleanings" Old Times and Old Scenes is published quarterly  
January-February, May-June, September-October and November-  
December for members of the Ypsilanti Historical Society.  
Single copies \$1.00.

Editorial overseer Foster Fletcher, contributor-composer  
Sharon Patterson, contributors: Doris Milliman and Ethel  
O'Connor.

Cover design by Art Howard.

Contents of "Gleanings" may be reproduced if consent is  
received and credit given.

Office of the Ypsilanti Historical Society is at 220 North  
Huron St., Ypsilanti, MI 48197



Hear Ye!

Hear Ye!

The MARCH MEETING of the YPSILANTI HISTORICAL SOCIETY will be held on MARCH 21st, 1982 - Sunday Afternoon

3 O'Clock

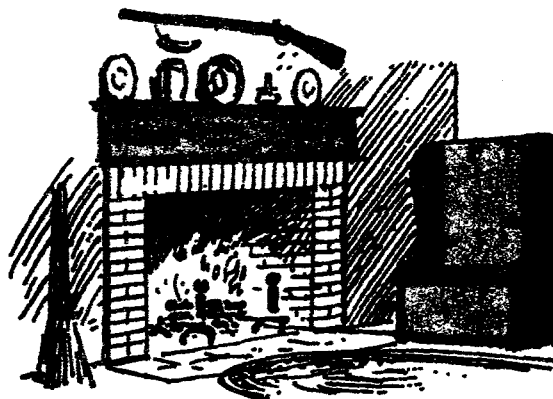
at the MUSEUM

220 NORTH HURON ST.

MR. JOHN KIRKENDALL, loyal University of Michigan alumnus, successful Ypsilanti Attorney, an International Twirler, and Creative Gourmet, will entertain and inform with "EXAMPLES AND SAMPLES OF COOKING IN AMERICA'S RESTORED VILLAGES".

Refreshments will be served.

Bring a GUEST!



# THE MAYORS OF YPSILANTI 1858-1976

In 1976 the Ypsilanti Archives and Historical Society compiled a booklet of the Mayors of Ypsilanti. It contained photographs of each Mayor and the dates of his term of office.

The biographical profiles of the Mayors of Ypsilanti will be presented in "Gleanings" in three segments. The first profiles appeared in the October, 1981 issue. This is the second of the series.

All research presented is the work of Foster Fletcher, Ypsilanti City Historian.



**Henry P. Glover**  
1892-93

HENRY PIERCE STRONG GLOVER, son of Charles W. and Mary A. Glover, was born March 3, 1837 in Webster County, New York.

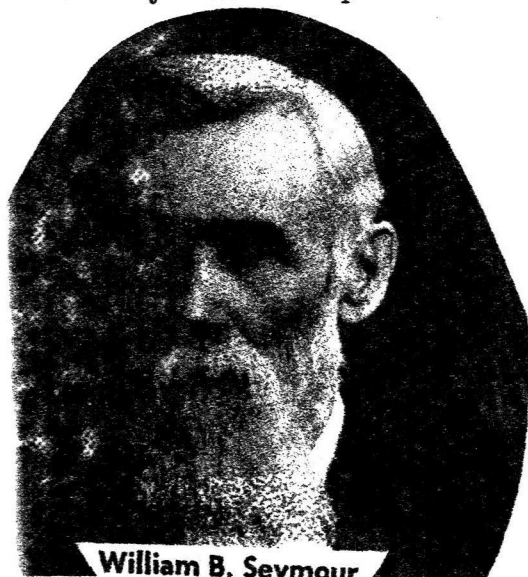
Came to Ypsilanti Township with parents in 1839 and lived on Willis Road just west of Hitchingham Road. At an early age he worked as a clerk in the drygoods store of Hewitt Bros.

In 1878 he opened his own drygoods store at 102 Congress St. (Michigan Avenue) and was there for ten

successful years, selling out to Lamb, Davis and Kishlar.

In 1890 he promoted and built the Ann Arbor-Ypsilanti Motor Line with R.W. Hemphill. He served as President of the Ypsilanti Dress Stay Co., President of the Scharf Tag Label & Box Co., President of the Ann Arbor Electric Railway Co., Vice-President of the Ypsilanti Savings Bank and found time to serve as Ypsilanti's Mayor 1891-92. He married Nancy Jane Kishlar on April 17, 1860 and they lived at 118 South Huron Street until his death on February 21, 1912.

Surely one of Ypsilanti's most distinguished citizens.



**William B. Seymour**  
1893-1894

WILLIAM B. SEYMOUR, born in Victory, Cayuga County, New York on March 4, 1833.

Came to Ypsilanti in 1855 and married Anna E. Peckham of Climax, Michigan on October 10, 1858. They resided at 517 Emmet Street for many years.

In 1861 he served as a Commercial

traveler and as an Insurance Agent for many years. He served as Alderman from the 3rd Ward and always took an active part in City Affairs. Elected Mayor of Ypsilanti 1893-94. He died in 1916.



**Harlow D. Wells**  
1895-1896

Harlow Davis Wells, born January 15, 1855 on a farm in Wayne County. He was the son of Chandler and Eliza Davis Wells.

He married Violette Riggs of Belleville on March 2, 1897. Harlow was born son of Harlow and Eliza Davis but after his father died, his mother married Rev. Chandler Wells and Harlow assumed the name of Wells.

He was a partner with Hiram Fisk in the grocery located at 123 West Michigan. Always active in politics, he was appointed Postmaster in 1900

and served for 4 years. Also Alderman from the 3rd Ward living at 309 West Cross Street and then elected Mayor in 1895. Died February 24, 1913.



**Nolan B. Harding**  
1897-1898

NOLAN BRUCE HARDING, born in 1854, Brusetown, West Virginia.

He was a graduate of Smithfield Academy, Smithfield, Pa. and the University of West Virginia. In 1887 he went to California for two years and then came to Ypsilanti and entered the hardware business with F.L. Shaefer at 124 West Michigan until his death, July 28, 1906.

He married Mary Elizabeth Robinson in 1875 and they lived at 801 Congress Street.

Active in Ypsilanti politics, he was elected Mayor in 1897-98. 4.



**Don L. Davis**

1898-1899

DON LOUIS DAVIS, born September 18, 1859 in Ypsilanti, son of Parmenio and Carlista Showerman Davis.

Married Ida May Sweet on November 2, 1872, daughter of William T. and Margaret Van Tuyl Sweet, born May 19, 1860 in Romulus, N.Y.

The Davis family lived at 322 Maple from 1872 until about 1900 when they moved to 102 South Washington Street.

With his father, Parmenio and then with J. Herbert Hopkins, he operated a grocery and general store at 42-44 East Cross in the 1890's

as well as a Crockery, Grocery and Bakery at 131-133 West Congress St. (Michigan Ave.) and moving that store to 200 West Congress in 1905 when the First National Bank bought the property at 131-133 Congress.

Always interested in school and civic affairs, he was elected Mayor of Ypsilanti 1898-1899. He died November 1st, 1934.

HENRY R. SCOVILLE repeats as Mayor of Ypsilanti 1900-1901.

OLIVER EMERSON THOMPSON, son of Benjamin and Mercy S. Thompson, born in 1838. Married Elizabeth Cooper, who was born on November 17, 1838.

Oliver had several business enterprises in the big brick building at 400-6 River Street. A dealer for agriculture implements, he had an extensive stock of paints, oils, wagons, carriages and other farm items, manufacturing several of them. The Thompson Family had extensive real estate holdings on East Cross Street and extending north to Maple Street.



**O. E. Thompson**  
1901-1902



Always interested in banking and civic affairs, he was elected Mayor of Ypsilanti 1901-2. Died in 1910.



**Martin Dawson**  
1902-1903

Implement and Feed Store at 213-215 West Michigan.

In 1907 he became the Agent for the Overland automobile.

He was elected Mayor of Ypsilanti in 1902. His old partner, Clifford R. Huston, became Mayor the next year. He died March 21, 1915.

MARTIN DAWSON, born November 11, 1862 in Limerick, Ireland, son of Michael and Bridget Dawson and lived on a farm near Willis, Michigan. Married Mary (Mamie) Fletcher January 6, 1886, daughter of Franklin and Mary Harris Fletcher. In 1892 he moved from Willis to Ypsilanti and became a partner with Clifford R. Huston in Flour, Feed and Farm Implement business located at 14 South Washington Street.

In 1901 the partnership dissolved and Martin Dawson opened an



**C. R. Huston**  
1903-1904

Detroit on July 9, 1931 and was given a Masonic funeral.

CLIFFORD R. HUSTON, born March 22, 1865 in Canton Township, Wayne County, son of Reuben and Sarah E. Huston.

He graduated from Michigan State Normal College in 1886 and studied law at the University of Michigan. Married Sarah Eudora Fairbain of Detroit on September 10, 1901.

He was a business partner with Martin Dawson from 1892 to 1902. Elected Ypsilanti Mayor in 1903 and in 1905 moved to Detroit where he was a grain broker. He died in



**John P. Kirk**  
1908-1910

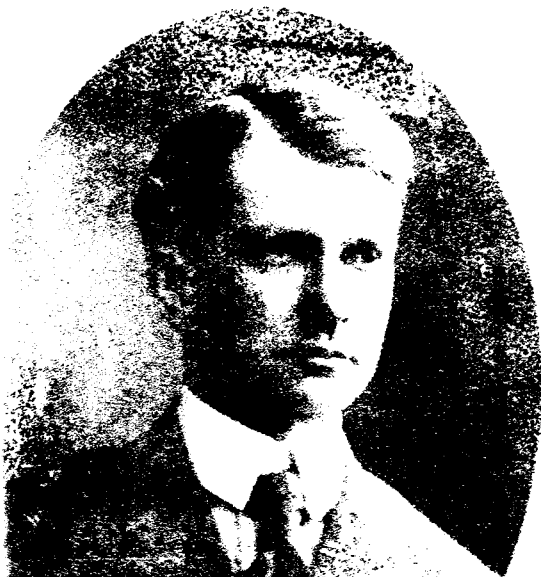
JOHN PATRICK KIRK, born September 20, 1867, son of Bernard and Ann Murphy Kirk.

He graduated from Ypsilanti High School in 1886 and the University of Michigan Law School in 1888. On June 8, 1891, he was appointed City Attorney and was a partner in the Law Office of Judge J.W. Babbitt.

John served as 1st Lieutenant, Co. H. Fourth Regiment, Michigan State Troops and became a Colonel at the time of the Spanish-American War, 1898-1899.

He married Mary Schaff Acker, daughter of John and Mary Smith Schaff, June 20, 1898, at Chattanooga, Tennessee.

He served as President of the Ypsilanti Savings Bank for several years after being elected in 1931. He lived at 427 Ballard from 1907 until his death, August 22, 1952. He was elected Mayor in 1908.



**Tracy Towner**  
1910-1912

TRACY LAY TOWNER, born March 2, 1864, son of Norman and Jeannette Spencer Towner in Ypsilanti. Some of the family came to Ypsilanti in 1835 from New York State and others followed in 1856. Tracy graduated from the old Seminary and from the University of Michigan Law School in 1888, the same class as his close friend, John P. Kirk.

His family lived at 303 N. Huron and he continued there until his death, October 14, 1943.

As an attorney and representing five Insurance Companies, he maintained an office in the Ypsi-

lanti Savings Bank Building at 1 South Huron Street.  
He was elected Mayor in 1910



**Frank Norton**  
1912-1914

FRANK AUSTIN NORTON, born June 1, 1867, in Ypsilanti, son of Austin D. and Sarah Jane Norton.

Frank located on Lowell Street and started a commercial greenhouse, expanding several times thru the years. He married Lena Eisenlord on September 18, 1895, daughter of Joseph Eisenlord of Northville, Michigan.

He served four years as 3rd Ward Councilman and then was elected Mayor in 1912. Died October 2, 1947.

LEE NATHAN BROWN, son of Leicester R. Brown, was born October 6, 1869, on the family farm near Rawsonville.



**Lee Brown**  
1914-1916

He attended the old Seminary and later "read Law" in various offices of attorneys and passed the State Bar examination.

Began as an attorney in 1893 and had his office at 10 E. Cross Street.

He was elected Mayor of Ypsilanti in 1914 and it was during his term that Michigan Street became Ferris Street and Congress Street became Michigan Avenue.

He died November 5, 1948 after four happy marriages.



**C. V. Brown**  
1916-1920

CLARENCE V. BROWN, born March 21, 1879 in Bellevue, Ohio.

He married Bessie M. Gannan in May, 1900 and they moved to Ypsilanti on March 1st, 1911, having recently purchased an interest in Press Steel Whiffletree Company, changing the name to United States Pressed Steel Whiffletree Company in 1912. This plant was located near Stewart Street where the old Cornwell papermill was located, now site of Ford Motor Company plant. "C.V.", as he was called, was active in business and social affairs and was a

Charter Member in 1917 of the Ypsilanti Rotary Club.

He served two terms as Mayor, being elected first in 1916 and serving thru WW years.

The plant and property was sold to Ford Motor Company in 1930 and the Browns moved to Kalamazoo, where he died several years ago.



**Theodore Schaible**  
1921-1922

THEODORE E. SCHAIBLE, born March 6, 1888 in Freedom Township.

He married Charlotte Melissa Clark, daughter of John M. and Lizzie Clark.

After graduating from Cleary Business College, he worked in the office of the Michigan Central Railroad and in 1909 was hired by Ford Motor Company as company representative for Washtenaw County and much of Michigan.. In 1910, when there were only six automobiles registered in all of Washtenaw

County. He and E.G. Wiedman established a Ford Agency for Washtenaw County with headquarters in Saline, Michigan. They sold the models that preceded the Model-T Ford and soon moved their business to Ypsilanti locating in a brick building known as the Hawkins Garage, at the rear of 27 N. Washington Street.

"The Schaible-Wiedman Auto Co. Automobiles, Accessories and Supplies" their 1912 Directory Ad reads.

It was in the early spring of 1912 a disastrous fire struck that building. Undaunted, property at 212-14 Pearl Street was bought and a modern garage built. The partnership dissolved with Emmanuel G. Wiedman retaining the Ford dealership at 212 Pearl Street and Schaible built a salesroom and garage for the Buick agency at the southwest corner of East Michigan Avenue and River Street. He had pioneered in selling the Model-T Ford, the Maxwell, Buick six, the LaSalle, the Cadillac 12, Rochne and Studebaker Champion.

Active in Church, Lodge and Civic affairs, he served as Ypsilanti Mayor 1920-1922. He moved to Ann Arbor in 1935 where he died August 22, 1975.



**E. R. Beal**  
1922-1923

EMERY RICHARD BEAL, son of Joseph and Martha Beal, was born on December 5, 1865 on a farm near Farmington, Michigan.

After High School, he graduated from the University of Michigan in 1885.

He came to Ypsilanti in 1893 and established a Drug Store at 224 West Michigan and lived in the building above the store.

June 9th, 1897, he married Minnie B. Jenkins of Portland, Michigan who had been a student at the Michigan State Normal College in 1895-96.

The Beals were always interested in Education and in 1922 Mrs. Beal was elected to the Ypsilanti School Board, serving until 1933.

It was while E.R. Beal was Mayor, 1922-23, that the Ypsilanti Centennial took place, the greatest celebration and homecoming in Ypsilanti history.

In 1906, the Beals bought the property at 502 Pearl Street and built a two-story house of embossed cement block, the first of that type in this area.

Having been raised on a farm, Emery was always interested in land and farming, buying several farms on Stoney Creek Road and nearly 100 acres between Washtenaw and Congress east of Mansfield and actively farming that tract.

He died on March 3, 1939.



**Hugh E. Vandewalker**  
1924-1928

HUGH E. VANDERWALKER, son of Arthur and Jeanette Huntley Vanderwalker, born in Kalamazoo County July 15, 1876. He came to Ypsilanti in 1900 to try to improve his frail health by taking baths in the Ypsilanti Mineral Bathhouse at 28 N. Huron Street. His health improved and December 3, 1902, he married Abbie Vought, daughter of Philip Grandon and Mary Reed Vought. Abbie was born October 27, 1879 near Cherry Hill in Superior Township. In 1903 Hugh formed a partnership with Fred W. Green selling Real Estate, Insurance and making loans.

In 1907 he became a partner with George R. Gunn in the same kind of business and lived at 104 South Huron Street. Within a few years he became manager of the G.H. Scharf Co.

In 1914 he became State Agent for Peoria Life Insurance Company. He was elected Mayor of Ypsilanti in 1924 and served

two terms. He died April 8, 1943.



**Matthew Max**  
1929-1934

MATTHEW MAX, born September 5, 1877, son of Nicholas and Mary Henninger Max. He married Katherine Tern on November 14, 1907.

Mat served twenty years as Fifth Ward Alderman, holding public office every year from 1908 until his death on January 12, 1954.

In 1934 he was appointed Ypsilanti Postmaster, retiring in June, 1949.

A former President of the Chamber of Commerce, Life Member of the Ann Arbor Elks Club, member of the Knights of Columbus, Ypsilanti Kiwanis Club and the Loyal Order of Moose.

He was owner of a shoe store at 103 West Michigan Avenue and at the time of his death was serving his third term on the Washtenaw Board of Supervisors.

He was elected Mayor of Ypsilanti in 1928 and served in that capacity until 1934.

He died at his home, 105 Babbitt Street, on January 12, 1954.



**Ray H. Burrell**  
1935-1940

RAY H. BURRELL, born August 31, 1893, sone of Alfred J. and Jennie L. Burrell.

He married Julia Rust October 7, 1914, daughter of Frank J. and Eva A. Rust of Willis.

Ray was a Charter Member of the Ypsilanti Kiwanis Club, served as a Director of the Ypsilanti Area Chamber of Commerce, Chairman of the Ypsilanti OPA Rationing Board during WWII, Life Member of Queen City Lodge, No 167, Knights of

Pythias and past Grand Chancellor of the Knights of Pythias of Michigan.

Ray Burrell, always interested in Civic, church and Fraternal doings, was elected City Alderman, serving from 1924 to 1932. He was a partner in the A.J. Burrell & Son Co., that business being formed in 1915 by his father Alfred J. Burrell, making granite headstones and burial vaults. Ray was elected Mayor of Ypsilanti in 1934 and it was that year he appointed Louis S. White as City Historian, a great thing for the Ypsilanti Historical Society and the community.

It was while he was Mayor that the water filtration and sewage disposal plants were built. At the time of his death on December 1, 1965, he was a director and Vice President of the Ypsilanti Savings Bank. He was Mayor of Ypsilanti 1934-1940.



**Ross K. Bower**  
1941-1946

ROSS K. BOWER, born October 27, 1901, son of David E. and Barbara M. Bower, Colon, Michigan.

He came to Ypsilanti in March of 1923 and was in the Real Estate business with George Hayes, and later expanding successfully on his own in Real Estate and Insurance.

The son, Robert K. Bower, joined the Bower Agency in the 1950's and about 1955 Earl Freeman, a long established Realton and Insurance man joined the Bowers.

Ross was always interested in Civic affairs and was elected Alderman from the First Ward May 1, 1930 and

served until May, 1940. He was elcted Mayor of Ypsilanti on May 1, 1940 and served until May 1, 1947.

Florence L. Hayes and Ross K. Bower were married December 23, 1922. October 1, 1963, he retired from the business. The Bowers spend the winters in Leesburg, Florida and return to Ypsilanti for the summer months.





**Daniel T. Quirk**  
1947-1951

DANIEL TROWBRIDGE QUIRK, born June 8, 1903, son of Daniel Lace and Julia A. Trowbridge Quirk, Jr.

Married Jeanne Hastings Grover, daughter of Harrison Preston and Jeanne Gibson Hastings Grover, February 27, 1926 in Grand Rapids.

Always active in Civic Affairs, he served eight years on the School Board, headed the United Fund for three years, President of the Chamber of Commerce, a past President of the Ypsilanti Rotary Club, President of the Washtenaw County Humane Society and was President and Treasurer of the Peninsular

Paper Company for nearly twenty yeears.

He was elected Ypsilanti Mayor in 1947 at the time of the enactment of the new Charter for the City and served with eclat for four years.

He died on October 21, 1969.



**Carl J. Scheffler**  
1952-1954

CARL J. SCHEFFLER, son of Karl G. and Elise Schneider Scheffler, born October 25, 1909 in Ypsilanti. He married Alice E. Hathaway, daughter of S. Conger and Inez A. Hathaway, Albion, Michigan, on September 1st, 1930.

Carl served as Chief of First Aid and Compensation in the Parts and Equipment Division of Ford Motor. He rose rapidly with that company in the Industrial Relations and received several Community Service Awards from Ford Motor. He was always active in many divisions of civic work, serving as a Member of

Isaac Walton League, Ypsilanti Bou's Club, Boy Scouts of America. Elder and Treasurer of the Emmanuel Lutheran Church, Ypsilanti Planning Commission, Human Relations Commission often acting as Chairman, and Past President of the Ypsilanti Historical Society. He was elected Mayor of Ypsilanti in 1952 and served thru 1954.

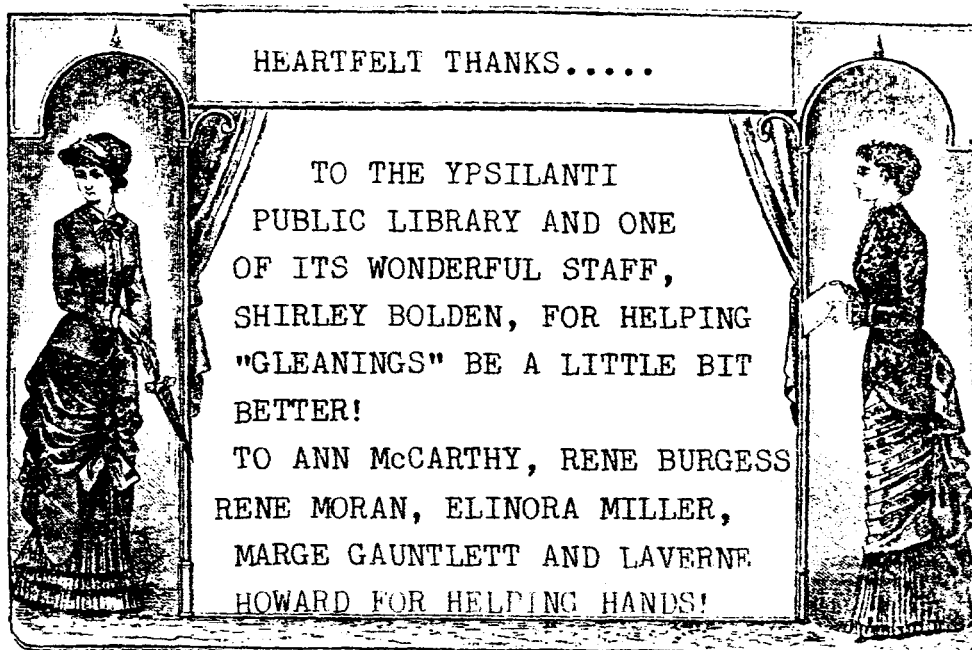
Carl retired from Ford Motor Company in 1971. His death on April 15, 1979 was not only a great loss to his family but to the entire community.

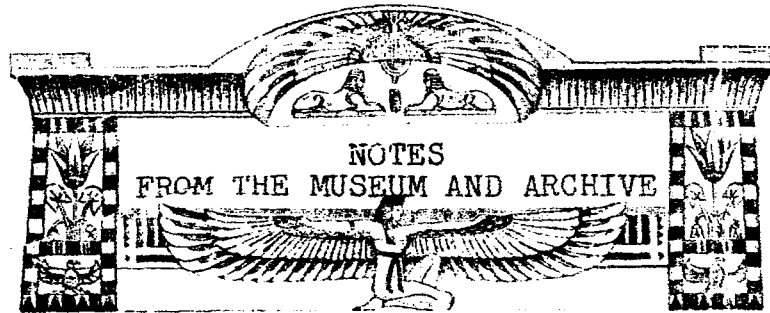


A candle's such a simple thing  
It starts with just a bit of string.  
Yet dipped and dipped with patient hand  
It gathers more wax upon the strand  
Until completed and snowy white  
It gives at last a lovely light.

Life seems so like that bit of string,  
Each day we do a simple thing  
Yet day by day as on life's strand  
We work with patient heart and hand  
It gathers joy, and makes days bright  
And gives at last a lovely light.

Helen Custer





"Christmas 1981" at the Ypsilanti Historical Museum is past but not soon to be forgotten. It was made memorable thanks to the creative touch of Kathryn (Mrs. LaVerne) Howard who possesses a flair for making a Victorian Christmas come alive at the Museum. We photographed every room in an attempt to preserve the magic she had brought to this lovely old house. Of course Kathryn had helping hands. LaVerne Howard, who shares his wife's love of history, Doris Milliman, Elinora Miller and Mike Miller all gave hours placing greens and candles, balls and poinsettias, bows and garlands.

The Display Cases were arranged with gifts suitable for that special Victorian Gentleman, his Lady and the youngsters in the family. The gold handled cane, the embroidered silk stockings and James R. Breakey, Jr's boyhood sled were perfect choices for the Victorian Santa Claus and Linda Hahlbrock helped us all to visualize how it might have been when there was one special treasure under the tree. Mike Miller shared some of his family treasures for the display.

The tree was elegant in the Parlor thanks to Doris Milliman, Mrs. Ron Urbanek, Mrs. Don Wardell, Mr. and Mrs. Don Disbrow and Mildred Gilmore. The Ypsilanti Garden Club always adds so much to the festivity of the Museum.

Art and Deci Howard placed wreaths and bows at the doors and windows of the house so that the winter scene, inside and out, was more picturesque.

DECEMBER 13th was the day for the City of Ypsilanti and all the friends of the Museum from miles around to find the Spirit of Christmas Past at 220 North Huron. The Emmanuel Lutheran Children's Chior sang under the direction of Mr. Karl Klaffke in their colorful blue robes with white stoles. Kathryn Howard and her committee of elves provided home-baked cookies and

fruitcakes and candies to serve with the holiday punch. It was a wonderful party not soon to be forgotten! And to everyone who helped make it special--the servers, the greeters, the children and the friends of the Museum--thank you.

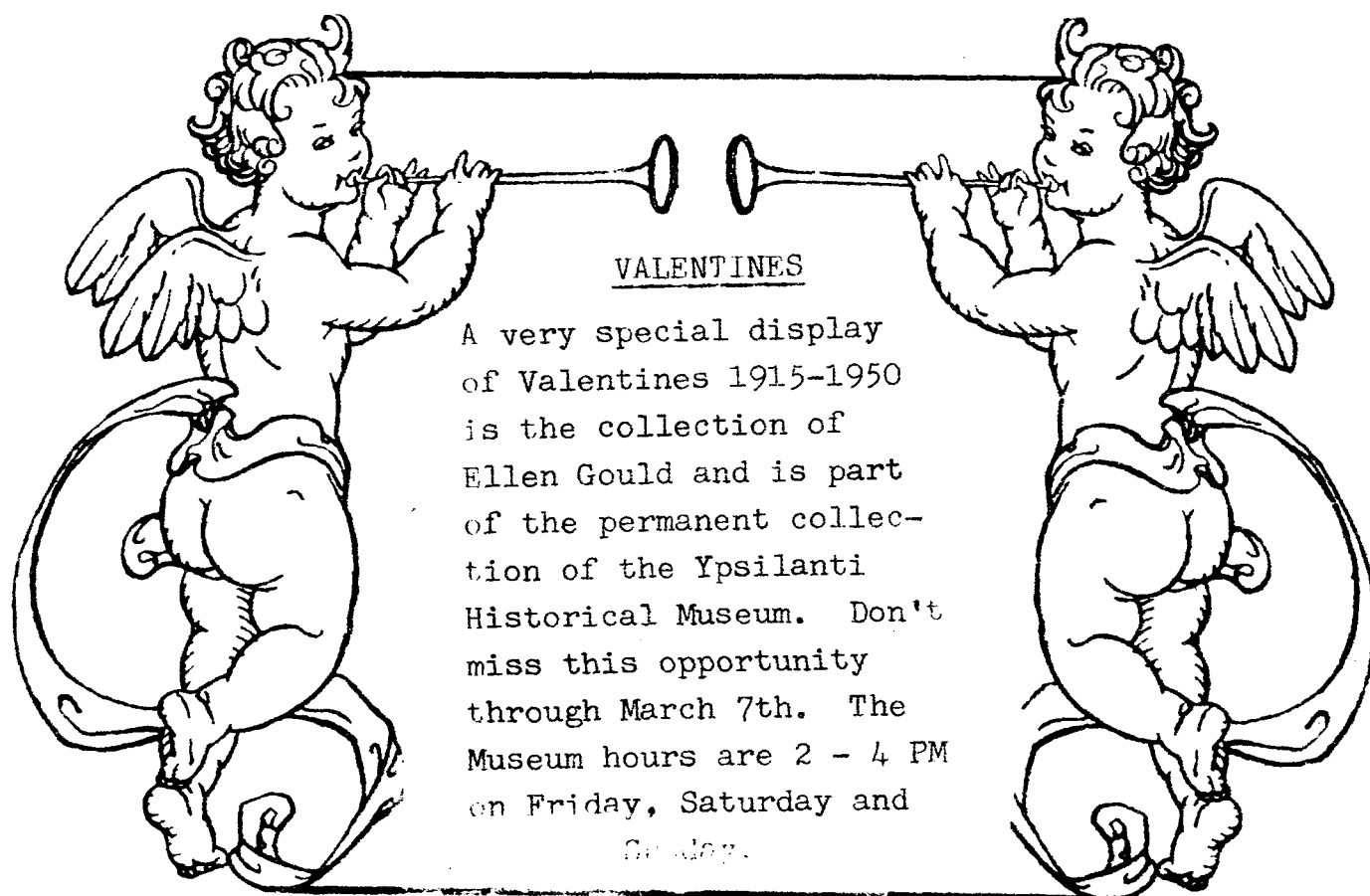
The January 17th Annual Meeting of the Ypsilanti Historical Society was a victim of the coldest day of the century and the turnout was hardy stock indeed.

We welcome Mr. LaVerne Howard as the new President of the Society and express our admiration for the dedication and excellence of Mrs. William McCarthy's two-year tenure. Mrs. Carl Miller was re-elected to a position on the Board of Directors and she is joined by new members Carl Worley, Betty Campbell (Mrs. James) and David Gauntlett. Mrs. Frank (Rene) Burgess will serve as Vice-President. We are continually blest by a hard-working Board of Directors. The year ahead promises to be one of continued pride and service to the community.

On February 7th the children of Ypsilanti were invited to their own Valentine-Making Party at the Museum. The lace and the colored paper were fashioned with bits of ribbon and hearts of gold into very special cards. Linda Hahlbrock, Rene Burgess, Ann McCarthy, Rene Moran, Rene Moran (junior), Mindy Moran and Jarry Meadows gave lots of encouragement to the forty-five youngsters turned artists. (The cupids who left Valentines on Foster's desk and on Sharon's desk have not been identified yet but there are suspicions!)

A special exhibit of VALENTINES is on display now and through the 7th of March. Linda Hahlbrock is again responsible for this exquisitely designed look at the collection of Ellen Gould. A former teacher, Ellen donated a collection spanning her forty-five year career. Many came to her from students. All express special sentiments of endearment. It is a very special exhibit that you will be glad you took time to share. Museum hours are 2 to 4 PM, Friday, Saturday and Sunday. This collection is part of the Museum permanent collection thanks to

Ellen.



VALENTINES  
A very special display  
of Valentines 1915-1950  
is the collection of  
Ellen Gould and is part  
of the permanent collec-  
tion of the Ypsilanti  
Historical Museum. Don't  
miss this opportunity  
through March 7th. The  
Museum hours are 2 - 4 PM  
on Friday, Saturday and  
Sunday.

#### WHO CAN BE A MEMBER OF THE YPSILANTI HISTORICAL SOCIETY?

The Historical Society is not an exclusive society or club.  
You qualify no matter where you live. (We have a new member in  
British Columbia, Canada.)

We are partially funded by the City but depend a great deal  
on our friends to pay whatever they can afford in Annual Dues.  
One popular membership is the \$10.00 sustaining membership.  
Do invite a friend to join us!



Carolyn Heliker  
710 Helen St.  
Ypsilanti, MI

Mr. & Mrs. James Lester  
1118 Grant Street  
Ypsilanti, MI

Joyce Peterson  
1151 Hull St.  
Ypsilanti, MI

Doris Ann Smith  
635 Mansfield Ave.  
Ypsilanti, MI

Vera L. Strongman  
1510 LeForge Road  
Ypsilanti, MI

Mr. & Mrs. Terry Webster  
332 Oak St.  
Ypsilanti, MI

Mrs. Jack Willoughby  
893 Cliffs Drive  
Ypsilanti, MI

Mr. & Mrs. Jack Wiltse  
1248 S. Harris  
Ypsilanti, MI

Dr. & Mrs. Scott Woods  
737 Kewanee  
Ypsilanti, MI

Mr. Harold L. Jones  
35 Photo St.  
Ypsilanti, MI

The Ypsilanti Historical Society gratefully acknowledges a contribution to the Memorial Fund from Mrs. Rote Holmes (Lucille) in honor of her grandparents, CHRISTINE M. WHITMIRE and CHARLES H. CAIN.

Mr. & Mrs. Hubert Bristol have generously endowed the MARY FLETCHER MEMORIAL FUND and the Ypsilanti Historical Society appreciates this continuing support. (Mrs. Bristol is Mr. Fletchers niece.)

Generous contributions have also been received from Mr. Fred Palma and Mr. and Mrs. Andrew Smith to defray costs of printing brochures and advertising material for the Ypsilanti Historical Museum. We are grateful to good friends.

## ACQUISITIONS

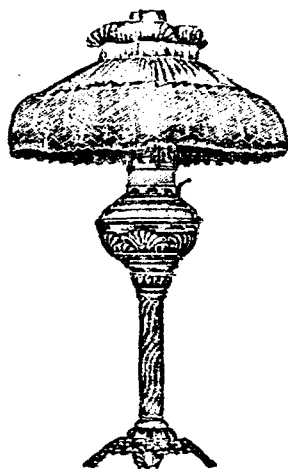
Mrs. John Barr  
Ypsilanti, MI



Prof. Carroll Osborn  
Ypsilanti, MI

Ruth S. Kennedy  
Birmingham, MI

Foster Fletcher  
Ypsilanti, MI



Ypsilanti Press article, June 8, 1965  
"The Rev. Robert P. Ward"

Looney Tunes Comic Book July, 1952

Photo of Irma Bielenberg

Memorial Booklet for Irma Bielenberg  
1897-1981

Two fur collars

Centennial Celebration Calendar,  
First Quarter section, 1967.  
Peninsular Paper Company, Ypsilanti,  
Michigan

Ypsi-Dixit 1904 (2 copies with news-  
paper clippings and programs of the  
graduation excercises, class-day  
excercises and the Alumni Assoc. of  
Ypsilanti High School Annual  
Banquet and Reunion)

Ypsi-Dixit 1905 with Junior Exhibi-  
tion program and class roll.

Ypsi-Dixit 1906 with Program of  
Graduation Excercises.

A letter dated Dec. 22, 1915, from  
Pinoche, Nevada to Mrs. G.B. Robbe  
RFD No 3, Ypsilanti, MI.

Freedom's Triumph pub. by The Maga-  
zine Circulation Co., Inc. Publishers  
of Woman's Weekly, Chicago.

The Standard Book of American Antique  
Furniture by Edgar G. Miller, Jr.

The Book of Rugs Oriental and European  
by Ignaz Schlosser

Historical Americana by Howard H.  
Peckham, University of Michigan Press

Pioneer Railroad, The Story of the  
Chicago and North Western System by  
Robert J. Casey and W.A.S. Douglas.

ACQUISITIONS con't

Main Line: Fifty Years of Railroad-  
ing with the Southern Pacific by  
Ernest L. King

Margaret Norris  
Grand Rapids, MI

14 letters written by Mark Norris,  
Roccena Vail Norris and other family  
members

Mrs. Al Walton  
Ypsilanti, MI

Correspondence and minutes of meetings  
of the Salvation Army Board of  
Directors.

Fred Peters  
Ypsilanti, MI

Centennial Anniversary Booklet 1881-  
1981, The First Congregational  
Church, United Church of Christ.

George Campbell  
Ypsilanti, MI

Photograph taken at the 50th Wedding  
Anniversary of William and Mary Lambie  
November 16, 1899 at the home on  
River Street.

Jennie Shipley Sprague  
Ypsilanti, MI

My Families: Shipley and Woolsey  
by Jennie Shipley Spragg

Foster Fletcher  
Ypsilanti, MI

"Descendants of David Inglis 1777-  
1842 in America"

Mrs. Daniel Turner  
Ypsilanti, MI

Several elegant lace pieces, belonged  
to Mrs. Turner's mother.

Donald G. Staebler  
Ann Arbor, MI

"Mother's Journal: Thoughts and  
Remembrances" Ella Goodell Staebler  
1881-1977

Jan Anshuetz  
Ypsilanti, MI

"Proposed Addition to Historic  
District, Ypsilanti, Michigan"  
East Side Association 12 April, 1978

File of promotional material and  
newspaper clippings for "Summer  
Festival, July 1974"

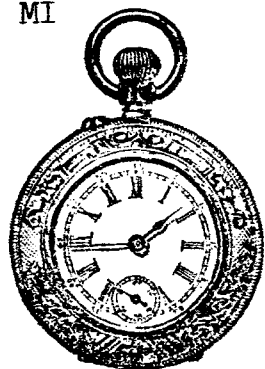
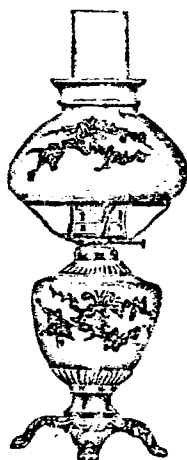
Mrs. J. R. Seaman  
Belleville, MI

1 young girls dress, black silk,  
green velvet trim

Ladies black silk dress with trim

Short lady's cape, dark green wool  
with black velvet trim

(Dresses were worn by Harriet Louisa  
Bennett Schreiner, Mrs. Seaman's  
grandmother in the late 1800's)





DO YOU KNOW YOUR ANCESTOR?

My Grandfather was \_\_\_\_\_ son of \_\_\_\_\_

and \_\_\_\_\_

(name both parents) and they were (farmer, merchant) \_\_\_\_\_

\_\_\_\_\_.

Parents married \_\_\_\_\_ (date) \_\_\_\_\_ (where)

Grandparents married \_\_\_\_\_ (date) \_\_\_\_\_ (where)

My Grandmother was \_\_\_\_\_, daughter of \_\_\_\_\_

\_\_\_\_\_, born \_\_\_\_\_, parent's

occupation \_\_\_\_\_.

Church affiliation \_\_\_\_\_

Schooling \_\_\_\_\_

My name is \_\_\_\_\_

First Middle (Maiden) Last

Address \_\_\_\_\_

Street City ZIP

Phone \_\_\_\_\_ Birthdate \_\_\_\_\_

Brothers and Sisters \_\_\_\_\_

My grandmother would have told the E.R.A. supporters "that's right"/"go away" (circle one).

Can you fill in the blanks? Do you know your ancestors well enough to predict the way they would feel about today's or yesterdays events?

Whether you scored high or low, the most significant question now is "could your grandchildren answer these questions 50 years from now -- about you?

(If you would like to return this form to the Archives, we will add this information to our files and insure your place in History!)

## **YPSILANTI HISTORICAL SOCIETY AND ARCHIVES**

President ..... Mrs. William (Ann) McCarthy  
Vice-President ..... La Verne Howard  
Secretary ..... Mrs. George (Sharon) Patterson  
Treasurer ..... Fred Peters

### **Board Members**

Ann McCarthy, La Verne Howard, Fred Peters, Rene Burgess, Doris Milliman, Phoebe Miller, Margaret Bemis, Linda Halhbrock, Foster Fletcher, William Edmunds, M.D., and Sharon Patterson.

### **Administration Committee**

Doris Milliman, Chairman, Rene Moran, Ann McCarthy, Eileen Harrison, Flora Block, Deci Howard, Marge Gauntlett, Ethel O'Connor and Sharon Patterson.

Miss Ethel O'Connor, Chairman of Museum Guides  
Mr. and Mrs. Arthur Howard, Plant Room  
Ruth Reynolds, Clothing Curator

### **Lewis House Board**

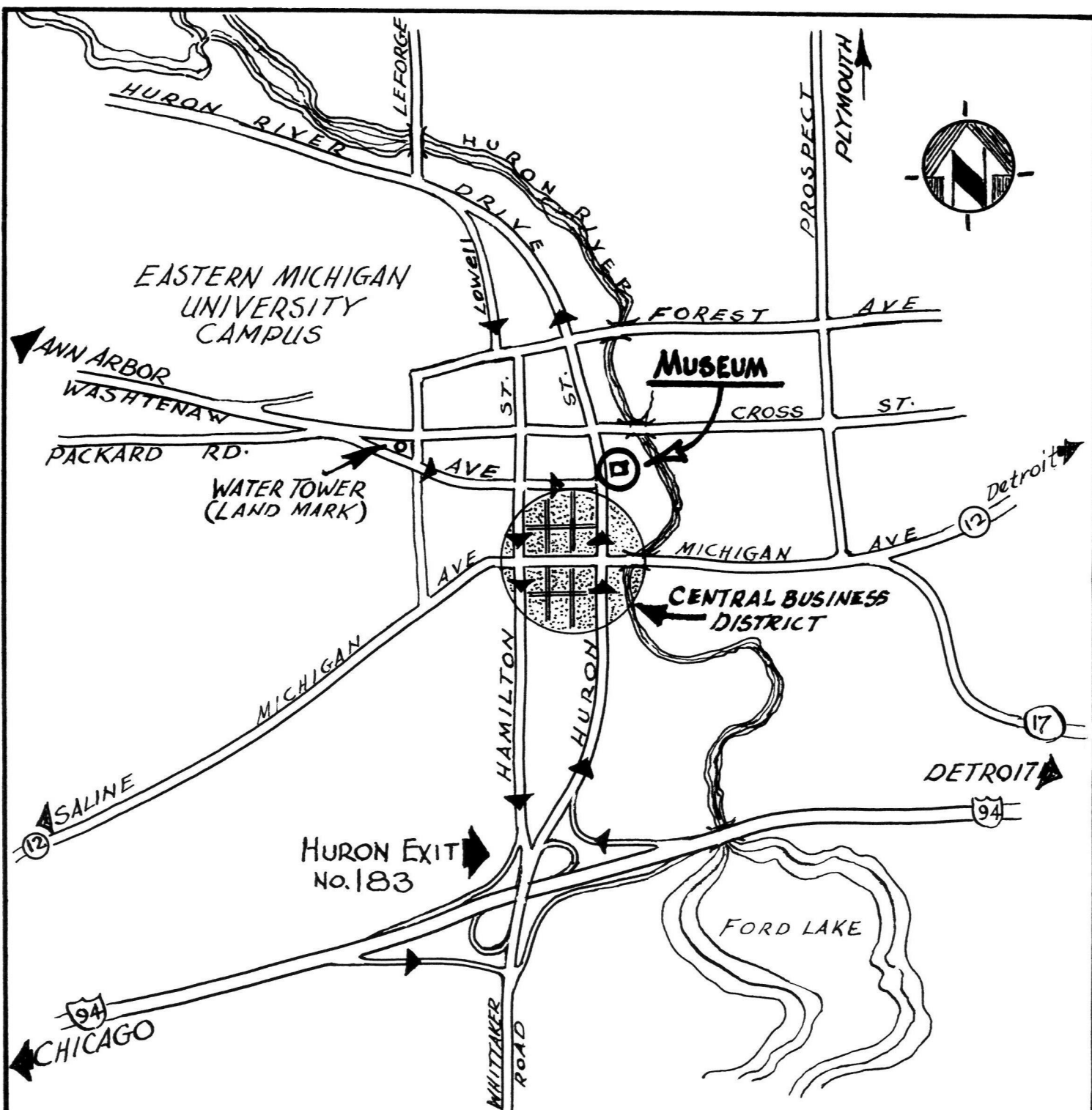
Arthur Howard, Chairman and Treasurer, Evangeline Lewis, La Verne Howard, William Edmunds, M.D., Secretary and Horatio Lewis



State legislation was passed in 1957 authorizing local governing bodies (Ypsilanti City Council) to "raise and appropriate money" and help with "any activity or project which...tends to advance historical interests" of the community. Public Act 213, 1957 applies to cities and villages.

February 2, 1960, Mayor Rodney E. Hutchinson appointed the following to serve as a Historical Committee: Mrs. H. Z. Wilber, Mrs. George Ennen, C.D. Bassett, T.S. Webber, Westly M. Dawson, Harry F. Shaefer, Miss Clara Sweet, Mrs. Elson (Ruth) Shaw, F.B. McKay, Mrs. M.I. Stadtmiller, E.R. Isbell, Albert W. Brown and the Mayor as Chairman with Louis S. White serving as City Historian.

October 10, 1960, the organizational meeting of the Ypsilanti Historical Society was held in the Estabrook School.



## *Upsilanti Historical Museum*

*220 N. Huron St.*

*Upsilanti Michigan 48197 - Phone 313 - 482-4990*

*Foster Fletcher - Historian*  
*Sharon Patterson - Archivist*

*Museum Hours*  
*Fri. Sat & Sun. 2-4 P.M.*  
*Archives - By Appointment*